

## Life made easier. With Carefree Checking.<sup>SM</sup>

Open a Carefree Checking<sup>SM</sup> account at Community Bank and get a free gift. Simply stop into your local branch or visit [cbna.com](http://cbna.com) (How easy is that?)

Community  
 Bank N.A.

bank happy.  


Bank rules and regulations apply. Minimum opening deposit is only \$50. Ask us for details.

 Equal Housing Lender | Member FDIC

# Community Arts Showcase

  
**The Arc**<sup>®</sup>  
Jefferson – St. Lawrence  
New York

***Achieve with us.***

*Saturday, May 11, 2019  
7:00 p.m.*

*Proscenium Theater  
SUNY Potsdam  
Performing Arts Center*



Jefferson - St. Lawrence  
New York

Achieve with us.®

Together, We Are Now



[www.thejrc.org](http://www.thejrc.org)  
(315)788-2730



[www.slnysarc.org](http://www.slnysarc.org)  
(315)379-9531

For people with intellectual and developmental disabilities

## St. Lawrence County Public Transit



(315) 386-2600 | [info@slcnypublictransit.com](mailto:info@slcnypublictransit.com)

[www.slnysarc.org/public-transit](http://www.slnysarc.org/public-transit) | @SLCPublicTransit

**At SUNY Potsdam,  
we believe the arts  
are for everyone.**

*The Department  
of Theatre and Dance  
is proud to support  
St. Lawrence NYSARC.*

*Congratulations to all of  
today's performers!*

[potsdam.edu/theatre](http://potsdam.edu/theatre)

# Potsdam



REAL. NEWS. HERE.



north country  
public radio



on air



online



live stream



podcasts



e-newsletters

radio@ncpr.org



(877) 388-6277

Rent the Lodge at Dodge Pond for  
Meetings, Reunions, Retreats, Weddings, or Family Fun

Visit The Lodge at  
Dodge Pond!

(315)848-2336

[www.lodgeatdodgepond.org](http://www.lodgeatdodgepond.org)

- Commercial Kitchen
- Lounge with Bar Available
- Suites and Cabins on Site
- Covered, Screened Pavilion with Electricity
- Indoor Accommodations of Up to 26 and Outdoor Up to 60

CONGRATULATIONS!

To the performers and artists presented at this year's  
Community Arts Showcase!

-The Caskinette Ford Team



Over 500 vehicles  
to choose from at your neighborhood Ford Dealer

Caskinette Ford

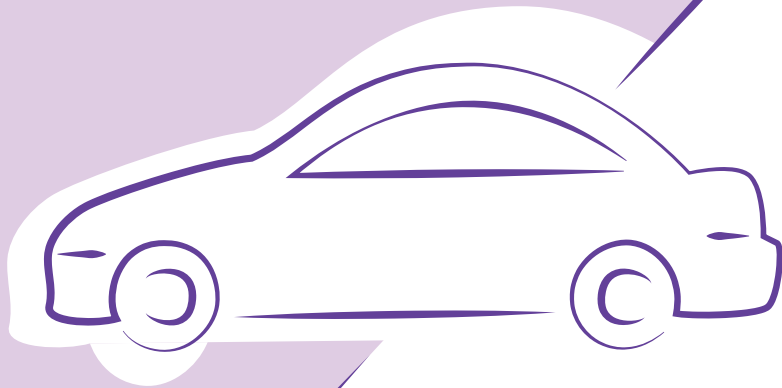
located in Carthage, NY!

Find Us on Social Media!



Art Mixer  
Sponsor

## Tracy's Used Cars



Office: 315-386-5428

Cell: 315-244-4970

3364 State Highway 68  
Canton, NY 13617

Bravo to  
all the actors,  
dancers, and visual artists!

***To All of the Performers,  
Artists, Staff Members and  
Volunteers of the Arts Program  
Over the Past 15 Years:***

***It has been my distinct  
privilege to play a part in the  
creation of your art. I am better  
and my life is fuller from sharing  
time with each of you.***

***Friedrich Nietzsche eloquently  
stated, "The essence of all  
beautiful art, all great art, is  
gratitude." So, thank you for  
sharing your talents as students  
and teachers. Please continue  
to dream and achieve, while we  
proudly cheer you on.***

***Always,  
Michelle***

## The Arc Jeffereson - St. Lawrence



[www.shOpthearcjslc.Org](http://www.shOpthearcjslc.Org)



PayPal



*Handmade products by people with disabilities*



**Saturday, September 14<sup>th</sup>**

*~* Canton Village Park *~*

For more info: 315-386-3529



**2019**

**Miles Traveled**

**304,868**

**Ridership to Date**

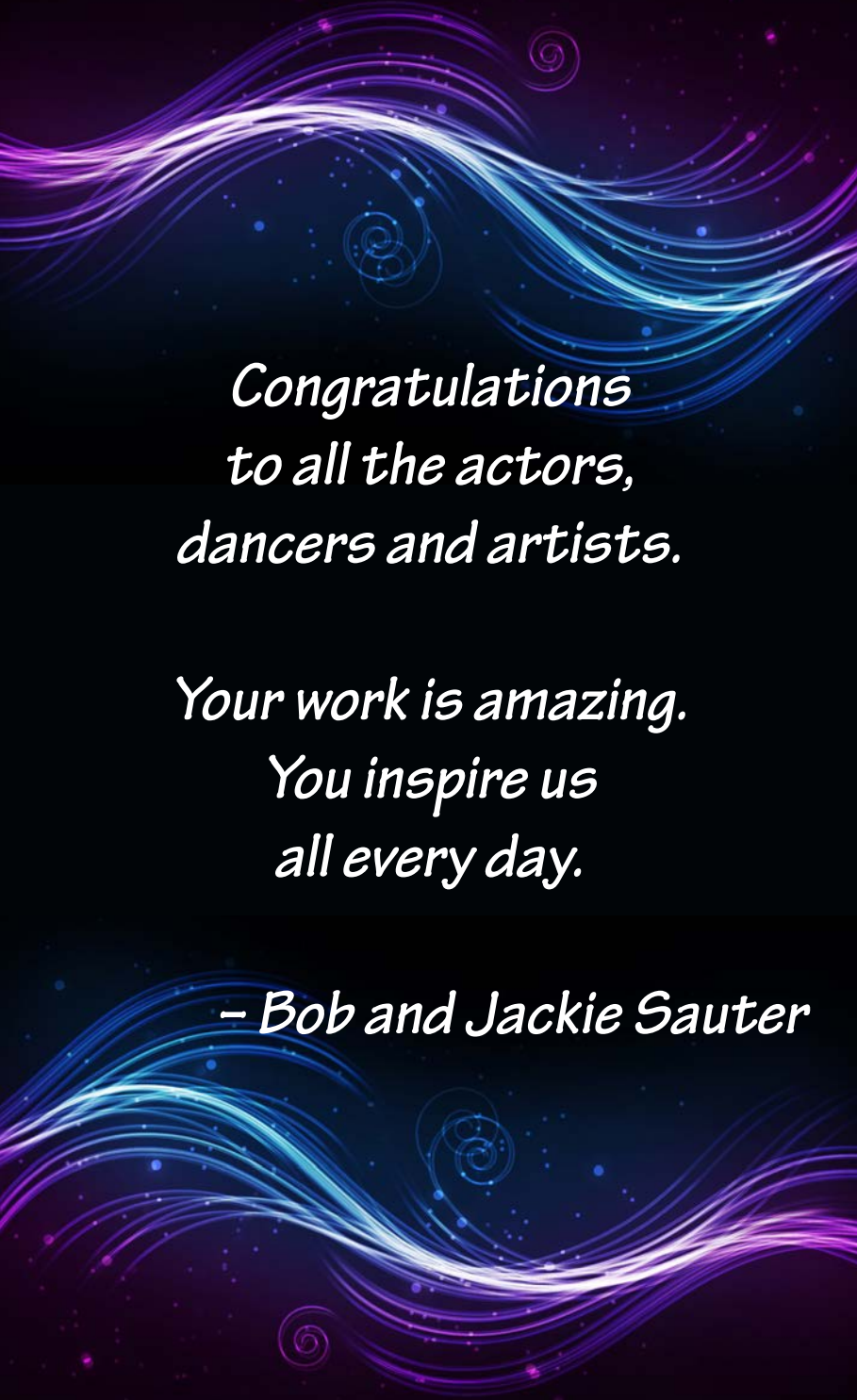
**31,607**

*Congratulations to all  
that participated in the  
Community Art's Showcase!*

*You are all Superstars!*

*– Troy and Lynn Pietroski*





*Congratulations  
to all the actors,  
dancers and artists.*

*Your work is amazing.  
You inspire us  
all every day.*

*– Bob and Jackie Sauter*

## Production Crew

### Producers:

Michelle Quinell-Gayle and Erin Armstrong

### Director:

Derrick Gidden

### Assistant Director:

Jennifer Yeager

### Choreographers:

Morgan Ose and Jennifer Yeager

### Set/Props/Costume/ Stage Crew:

Erin Armstrong, Michael Borrelli, Alyssa Brand, Morgan Ose,  
and Jennifer Yeager

### Tech/Sound Crew:

Grisselle Romero and Derrick Gidden

### Set Design/Construction:

Hanna Nitkowski

### Programs, Filming, and Publicity:

Kolby Weaver, Noel Weaver, and Jennifer Yu

### Artwork Exhibition:

Alyssa Brand, Cynthia McCormick and Gabrielle LaBarge

### Special Thanks to:

Marlene Smith, Tom Grabowski, Todd Canedy,  
Breanna Trombley, Don Borsh, Jay Pecora,  
and the SUNY Potsdam Theatre & Dance

## About the Community Arts Program

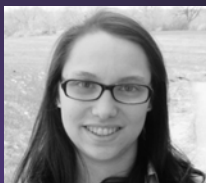
The program started in January 2005 to give people with developmental disabilities an opportunity to explore their artistic talents. Participants attend regular, integrated workshops focused on the creative arts.

This performance would not have been possible without our partnership with SUNY Potsdam's Theatre and Dance Department. For several years, actors and dancers in The Arc Jefferson - St. Lawrence's Community Arts Program have been working on campus at the Performing Arts Center for classes with college students. The result of this unique partnership is showcased tonight.

## Performers



Jenny Adams



Margaret Atchie



Greta Bellardini



Andrew Gemmill



Robert Hance



Jeffrey Hewitt



Clarissa "Suzy" Hoffleit



Sasha Davis-Kostin



Christopher Leonard



Morgan Ose



Steven Sauter



Timothy Victory



Jennifer Yeager

## Event Sponsors

Community Bank N.A., SUNY Potsdam, Tracy's Used Cars,  
North Country Public Radio, and Barb Heller

All of our talented Actors, Dancers, and Visual Artists have done such an amazing job with the work that has been produced for this year's Showcase. We could not be more proud of your sheer force of will. Each person brings such a unique element to the totality of what makes this show great and it could not be possible without the hard work that is put into it by all of you.

Thank you so much for making this process more magical than we could have imagined! We are thrilled to see all of you shining, doing what you do best. Thank you for being patient with us as we find our footing to bring this process together. We can't wait to see what you have in store for us in the years to come!

– Derrick and Jen

# Eureka!

A Techno-Mystery  
By Michael Hollinger

## Cast

Justin Abel – Andrew Gemmill  
Jenna Abel – Margaret Atchie  
Mom, Teen Girl – Greta Bellardini  
Mrs. Papadopoulos – Jennifer Yeager  
Archimedes, Computer Rep, CD Rep – Steven Sauter  
Mr. Kefauver – Jeffery Hewitt  
Diana – Jenny Adams

## Comedic Scenes

### SCENE ONE: Abel Family Office

Jenna and Justin realize sharing a computer is not as easy as it seems.

### SCENE TWO: Farley Middle School Auditorium

Mr. Kefauver announces a contest to win an Archimedes 5000 computer!

### SCENE THREE: Farley Middle School Hallway

Justin wants to see the new computers.

### SCENE FOUR: Abel Family Office

Who is Archimedes anyway?

### SCENE FIVE: Farley Middle School Auditorium

*Someone* broke the computers...

### SCENE SIX: Farley Middle School Hallway

"You've gotta help me!" The mystery is afoot and Justin needs Jenna's help.

### SCENE SEVEN: Abel Family Office

Justin and Jenna try to find answers.

### SCENE EIGHT: Farley Middle School Auditorium

Justin and Jenna think they have found the answer.

### SCENE NINE: Abel Family Office

Jenna pulls an all-nighter.

### SCENE TEN: Farley Middle School Auditorium and Hallway

Mr. Kefauver starts the contest while Jenna and Justin wrap up their investigation.

### SCENE ELEVEN: Abel Family Office

Justin and Jenna give Mom a hand.

## Intermission: 15 Minutes

## Dance

### **"New York New York"** – Frank Sinatra

Choreography by: Jennifer Yeager

Margaret Atchie, Greta Bellardini, Sasha Davis-Kostin, Robert Hance,  
Jeffery Hewitt, Suzy Hoffleit, and Timothy Victory

### **"Somebody to Love"** – Queen

Choreography by: Jennifer Yeager and Morgan Ose

Margaret Atchie, Greta Bellardini, and Timothy Victory

### **"Honey, I'm Home"** – Shania Twain

Choreography by: Morgan Ose

Sasha Davis-Kostin, Suzy Hoffleit, and Morgan Ose

### **"Like A Prayer"** – Madonna

Choreography by: Morgan Ose

Margaret Atchie, Jeffery Hewitt, and Christopher Leonard

### **"Head Above Water"** – Avril Lavigne

Choreography by: Morgan Ose

Margaret Atchie, Greta Bellardini, Sasha Davis-Kostin, Robert Hance,  
Suzy Hoffleit, Christopher Leonard, Morgan Ose, and Timothy Victory

### **"Girls Just Wanna Have Fun"** – Cyndi Lauper

Choreography by: Jennifer Yeager

Margaret Atchie, Greta Bellardini, Sasha Davis-Kostin, and Suzy Hoffleit

### **"People Like Us"** – People Like Us

Choreography by: Morgan Ose

Troupe